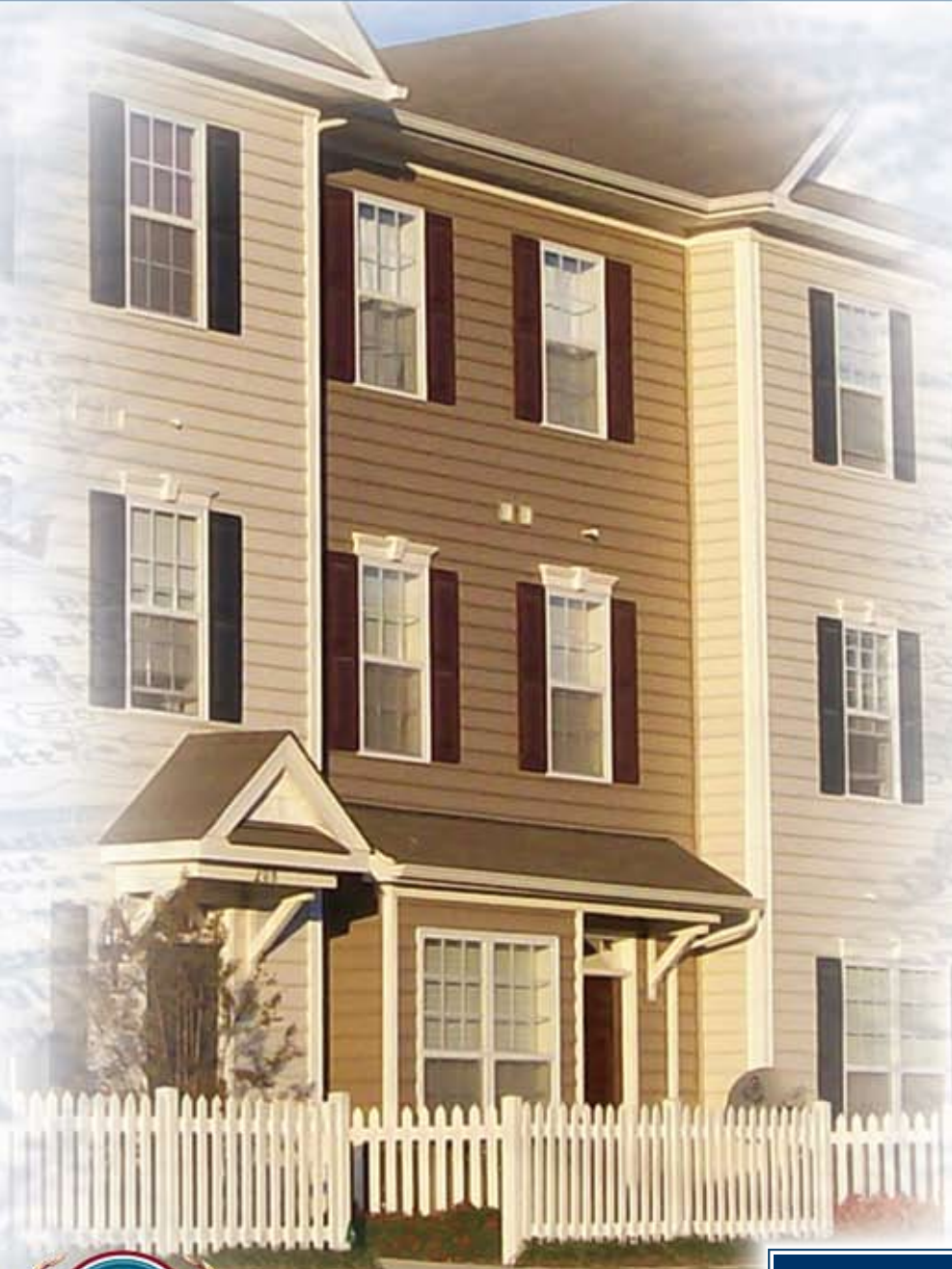


Venetian

Approx. 1,638 sq. ft. • 3 Bedrooms • 2.5 Baths



North Carolina

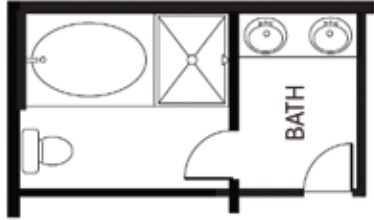
RENAISSANCE

P A R K

An Urban Take On Traditional Living



www.ChesHomesNC.com



**OPTIONAL
DELUXE BATH**



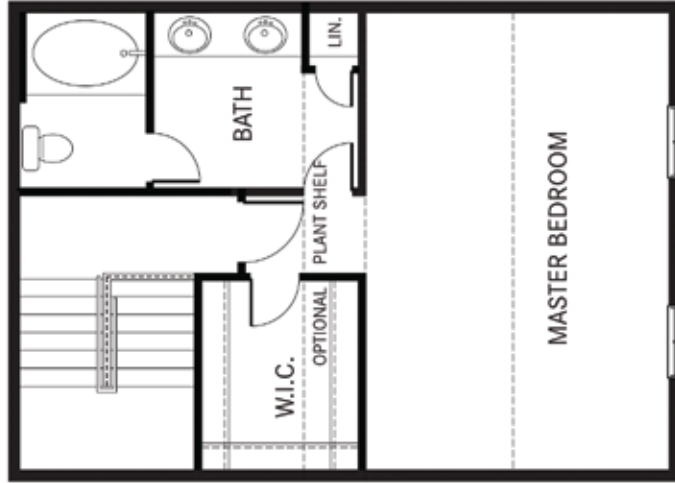
**OPT. SECOND MASTER SUITE
W/SITTING AREA**



**RENAISSANCE
P A R K**

An Urban Take On Traditional Living

Venetian



MASTER BEDROOM

W.I.C.

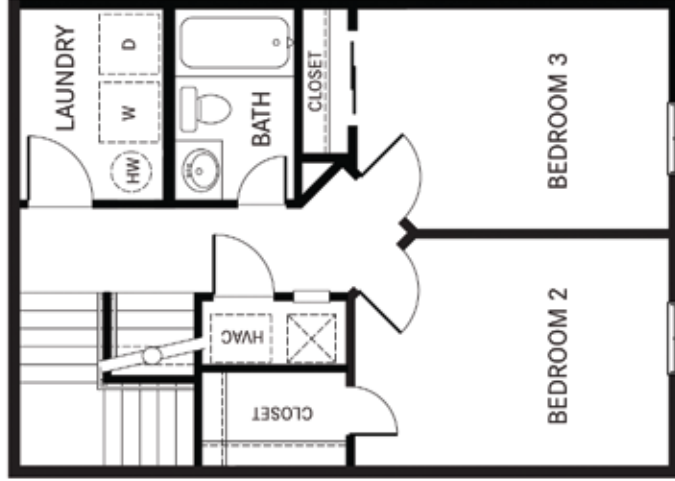
OPTIONAL

PLANT SHELF

LIN.

CLOSET

HVAC



BEDROOM 2

BEDROOM 3

CLOSET

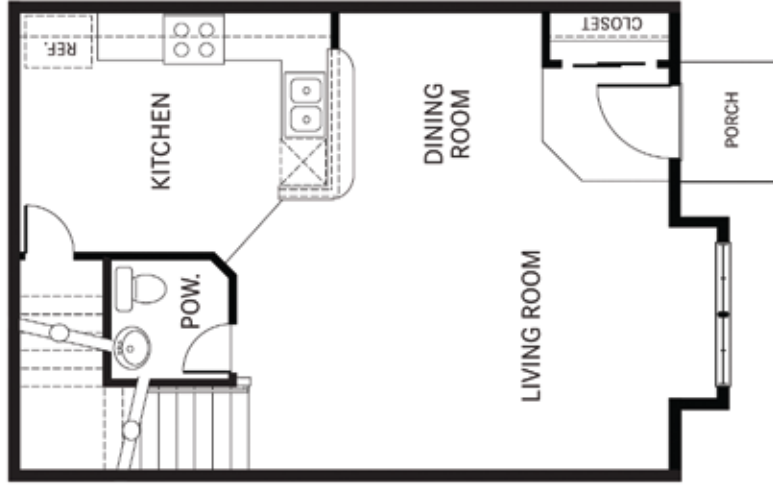
HVAC

LAUNDRY

W

D

BATH



LIVING ROOM

DINING ROOM

KITCHEN

POW.

REF.

CLOSET

PORCH

THIRD FLOOR

SECOND FLOOR

FIRST FLOOR



Sales by Coldwell Banker Howard Perry and Wainson Builder Services. All dimensions are approximate. Windows vary by elevation. Features and design specifications are subject to change without notice. Artwork is for illustrative purposes only. Actual construction details may vary. Optional and included features vary per community. See sales consultant for details. All plans and architectural elements are subject to approval and revisions by the Municipal and Community Architectural Review Boards and may change without notice.